



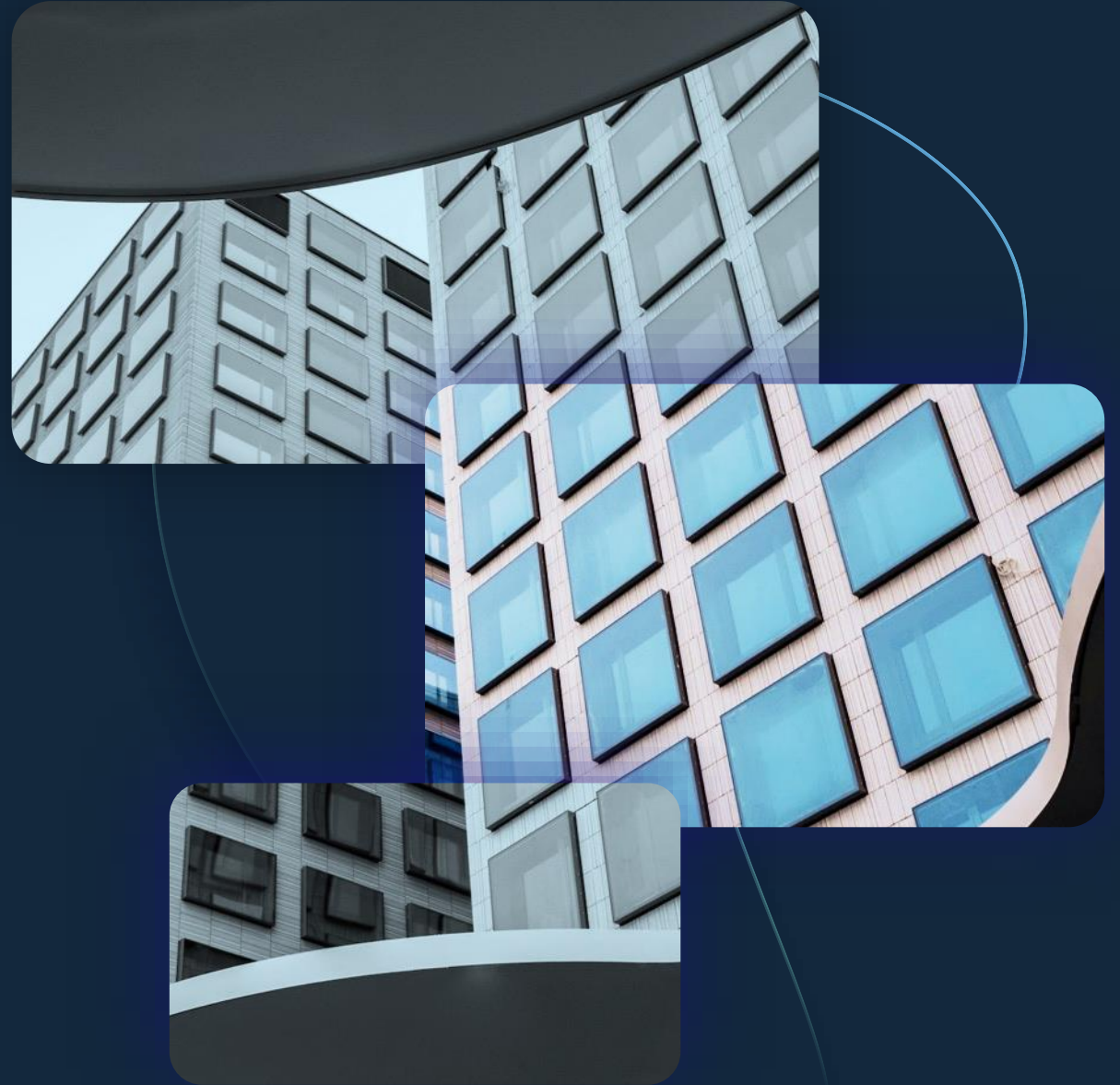
**EVER FLOW RIVER GROUP
PUBLIC CO., LTD.**



OUR ORIGINS

Established in 1998 by our Chairman, Mr. Kyaw Lwin Oo, E.F.R. began as a customs clearance agency. With over 35 years of experience in the logistics industry, Mr. Kyaw Lwin Oo built his career as a customs clearance agent before advancing to become the operations manager of the first Myanmar Container Line.

Through his deep expertise and extensive network of international freight forwarders, shipping agents, and logistics partners, Mr. Kyaw Lwin Oo successfully diversified E.F.R. into a group of companies, positioning us as a key player in the logistics and supply chain industry today.





MISSION



VISION



VALUES

COMPANY VISION

Our Vision is to be a leader in any industry that we are involved in whether locally or globally and to be a true citizens contributing to be the development our nation.

MISSION

We aim to offer superior products and services to our valued customers, deploying modern technology with young, energetic, and qualified professionals. We believe in fairness, and justice and ensure reasonable satisfaction all of our stakeholders.



E EFFECTIVE

F FAIRNESS

R RELIABILITY

OUR CORE VALUE

EFFECTIVE

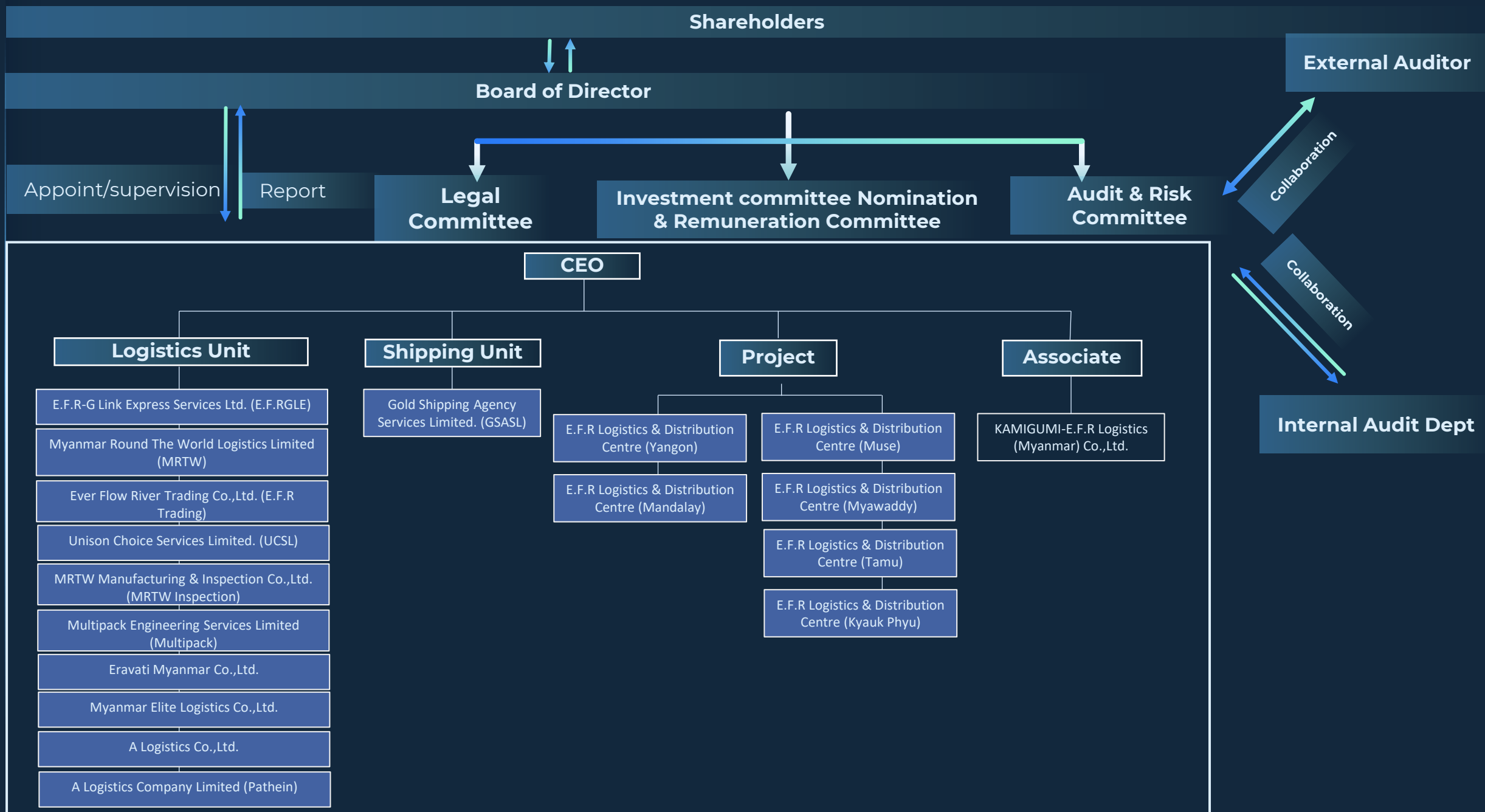
We strive to be effective by developing performance measures, regularly evaluating our performance, clearly communicating outcomes & results and implementing changes needed.

FAIRNESS

We believe in fairness, justice and reasonable satisfaction to all our stakeholders.

RELIABILITY

We aims to be a reliable partner for our customers and employees. Transparency and open communication are necessary to build lasting relationships.





CORPORATE MILESTONE

1998

EFR TRTG

Founded in 1998, Ever Flow River Trading Co., Ltd. was the Group's first company, providing trade services to exporters and importers

1999

EFR GLE

EFR G Link Express Services Ltd., the Group's first freight forwarder, offers complete logistics solutions through international partners.

2000

GSASL

Since 2000, Gold Shipping Agency Services Ltd., an E.F.R subsidiary, has streamlined the Yangon-Kawthaung-Ranong route with the MV. BEYPORE SULTAN, delivering cost-effective shipping

2005

MRTW

Myanmar Round The World Logistics Limited, the 2nd air freight forwarder established, serves as a cargo and general sales agent for major airlines, providing air freight services.

2011

ECHO

"MRTW Manufacturing & Inspection Company Ltd. was established to meet the growing demand for garment inspections, focusing on Japanese customers."

2012

GOC

Ever Flow River Group (Public) Limited was founded as a private company in 2012 and restructured into a public entity in 2014, consolidating all units under it.

2012

UCS

UNION CHOICE SERVICES LIMITED was the 3rd Freight Forwarding company founded by the Group and was set up to focus on the garment logistics business for well-known Clothing Brands.

2014

KAMIGUMI EFR

KMIGUMI EFR LOGISTICS MYANMAR COMPANY LIMITED. Was incorporated as a joint venture between Kamigumi Japan and EFR. This unit was set up to offer transport services to the local market.

2016

EFRLDCMDY

EVER FLOW RIVER LOGISTICS AND DISTRIBUTION CENTER (MANDALAY) CO., a joint venture of Future Trading, Southern Island, and EFR, aims to establish a logistics hub connecting Mandalay and Yangon trade

2019

MEL

Myanmar Elite Logistics (MEL), a joint venture under Ever Flow River Group since 2019, specializes in sea and air freight logistics. MEL offers container, bulk, and temperature-controlled shipping, customs clearance, and cross-border services with China, Thailand, and other neighboring countries. With a dynamic team, MEL provides tailored logistics solutions for global trade.

2020

E.F.R

E.F.R Group Public Company Limited listed on Yangon stock Exchange (YSX) on 28th May 2020 (Thursday) and its share trading was started at the same time.

2020

UN Global Compact

Since 2020, Ever Flow River Group Public Co. Ltd. has committed to the UN Global Compact's principles on human rights, labor, environment, and anti-corruption

2022

ERAVATI MYANMAR

Established in 2022, Eravati Myanmar, an E.F.R Group subsidiary, leads in trading rubber raw materials, expanding its impact in Myanmar's rubber market

EFR Glink

E.F.R G-Link Express Services Ltd. is a leading subsidiary of the E.F.R Group, specializing in 3PL and 4PL logistics with a strong international presence. The company is renowned for its expertise in special project cargo handling, customs clearance, and freight forwarding, establishing a robust reputation and loyal client base. E.F.R G-Link pioneers LCL consolidation for garments and general cargo, efficiently managing ex-works processes. Their specialized export services focus on the EU for garments and rice, India for beans, and cross-trade routes from China to Russia and Cambodia to the EU, ensuring reliable logistics solutions.

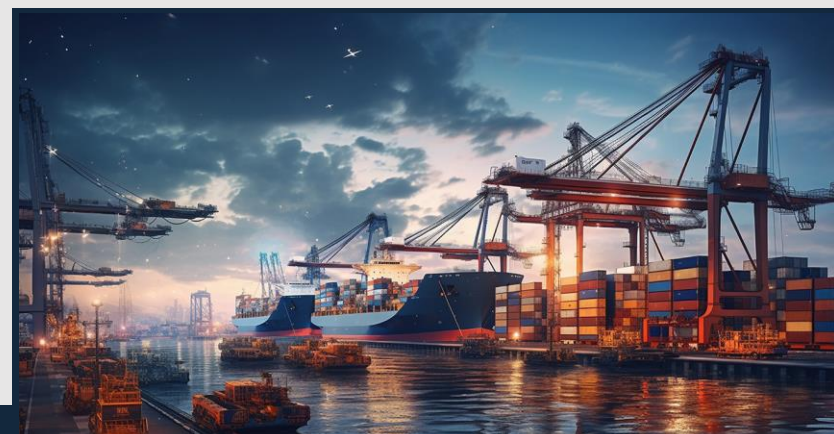


A Logistics

A Logistics Co., Ltd., established in July 2020, is a joint venture between Ayeyar Hinthar Holdings and Unison Choice Services (an E.F.R Group subsidiary). Managing the Ayeyarwady International Industrial Port (AIIP) in Patheingyi Industrial Park, the company offers comprehensive logistics solutions, including warehousing and container services. Recent expansions include local transportation across Myanmar using its own trucks and export shipments to Thailand via barge. These services enhance the company's ability to handle all logistics aspects, from transportation to customs clearance and delivery.

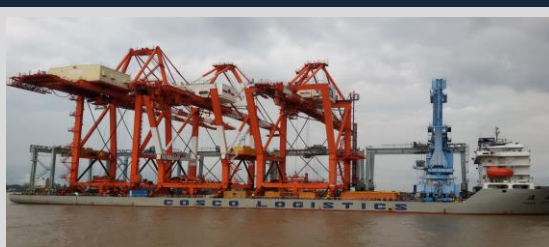
EFR LDC

Ever Flow River Logistics and Distribution Center (E.F.R LDC Mdy), under the E.F.R Group, is a logistics project with MIC approval since 2022. It offers comprehensive services including freight forwarding, customs clearance, warehousing, and trucking for domestic and international markets, specializing in seasonal cargo like agricultural products, garments, and medicines. E.F.R LDC Mdy has also expanded door-to-door FMCG delivery services and operates a depot in Yangon, providing storage, LOLO, and maintenance for shipping lines. The company is committed to quality and reliable logistics solutions.



MEL

Myanmar Elite Logistics (MEL), a joint venture under Ever Flow River Group since 2019, expanded globally in 2022 to provide comprehensive logistics solutions: Multi-Media Transportation, Cross-Border Services, Postal Services, and Custom Brokerage. MEL's multi-modal transport streamlines sea, air, and land routes for efficient deliveries, while Cross-Border Services facilitate seamless regional trade with expert customs handling. Postal Services cater to e-commerce and personal shipments with secure, trackable options, and Custom Brokerage ensures fast, compliant customs clearance. With a dynamic team, MEL merges local expertise with global reach for tailored logistics support.



MES

Multipack Engineering Services Limited (MES), a subsidiary of EFR Group, specializes in container transportation, stevedoring labor, and CFS bonded warehouse activities. MES also provides engineering services, including civil engineering, telecom projects, garment-on-hanger construction, and land leveling. Additionally, MES offers project feasibility studies, management, and consulting. With a strong focus on customer satisfaction, the company has become a trusted partner for large businesses in Myanmar.

MRTW

Myanmar Round the World Logistics Ltd. (MRTW Logistics), a subsidiary of E.F.R., specializes in domestic and international logistics, with a strong focus on air freight services. Partnering with top global airlines such as Saudia Airline (SV), ANA, Etihad, Korea Air, and others, MRTW Logistics serves as a cargo sales agent for various airlines. The company primarily caters to garment merchandisers in Japan, Europe, and the USA, ensuring efficient and reliable logistics solutions.



UCS

Unison Choice Services Ltd. (UCSL), a subsidiary of E.F.R Group, has been a key logistics provider for the global textile and garment industry since 2012. Specializing in short-haul trade across Asia and sea freight, UCSL offers tailored logistics solutions. In 2023, UCSL expanded with door-to-door delivery services for the retail market and secured strategic contracts with branding clients. The company also provides Container Freight Station (CFS) services for cargo to the EU and operates refrigerated trucks for distribution.

OUR SERVICES

Sea/ Air/Border Freight Forwarding
Cargo Consolidation Vessel Chartering.
Break-Bulk & Ship Husbanding Services
Exhibition/Project Cargo Handling
Logistics Financing



Shipping Lines Air Lines
Domestic Transportations
Multimodal Transportation



Trade Financing banking
Export/Import
Formalities Trade House

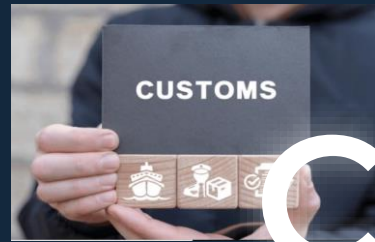


International Freight Forwarding

Transportation

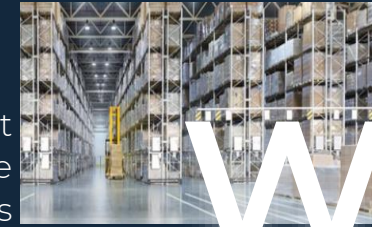
Trading

Trade Formalities Customs
Clearance & Formalities
exhibition Cargo Clearances Tax
Exemption Arrangements



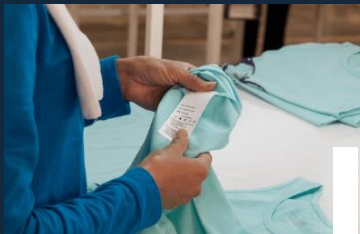
Customs Clearance

Inventory Management
Distribution Warehouse
Management Systems



Warehousing & Distribution

Surveys Garment
Inspections
Packaging and
Labeling Needle
Detectors



Inspection

Design & Constructions
Garment-On-Hangers
Arrangements Project
Transport Management
Maintenance Works



Logistics Engineering

Dry Ports Inland Container
Depots Logistics Hubs



Logistics Infrastructure Developments



“

OUR FOCUS IS UPON CUSTOMERS

When we put their needs at the center of our thoughts and actions, we improve constantly and in a results-oriented manner.

”

— KYAW LWIN OO

KYAW LWIN OO

Chairman of E.F.R Group





EVER FLOW RIVER GROUP
PUBLIC CO., LTD.

BOARD OF DIRECTORS



Mr Kyaw Lwin Oo
Executive Chairman



Mr Maung Maung Oo
Executive Vice-Chairman



Mr Than Aung
Executive Director



Mrs Khin Sone
Executive Director



Mr Than Aung
Independent Director



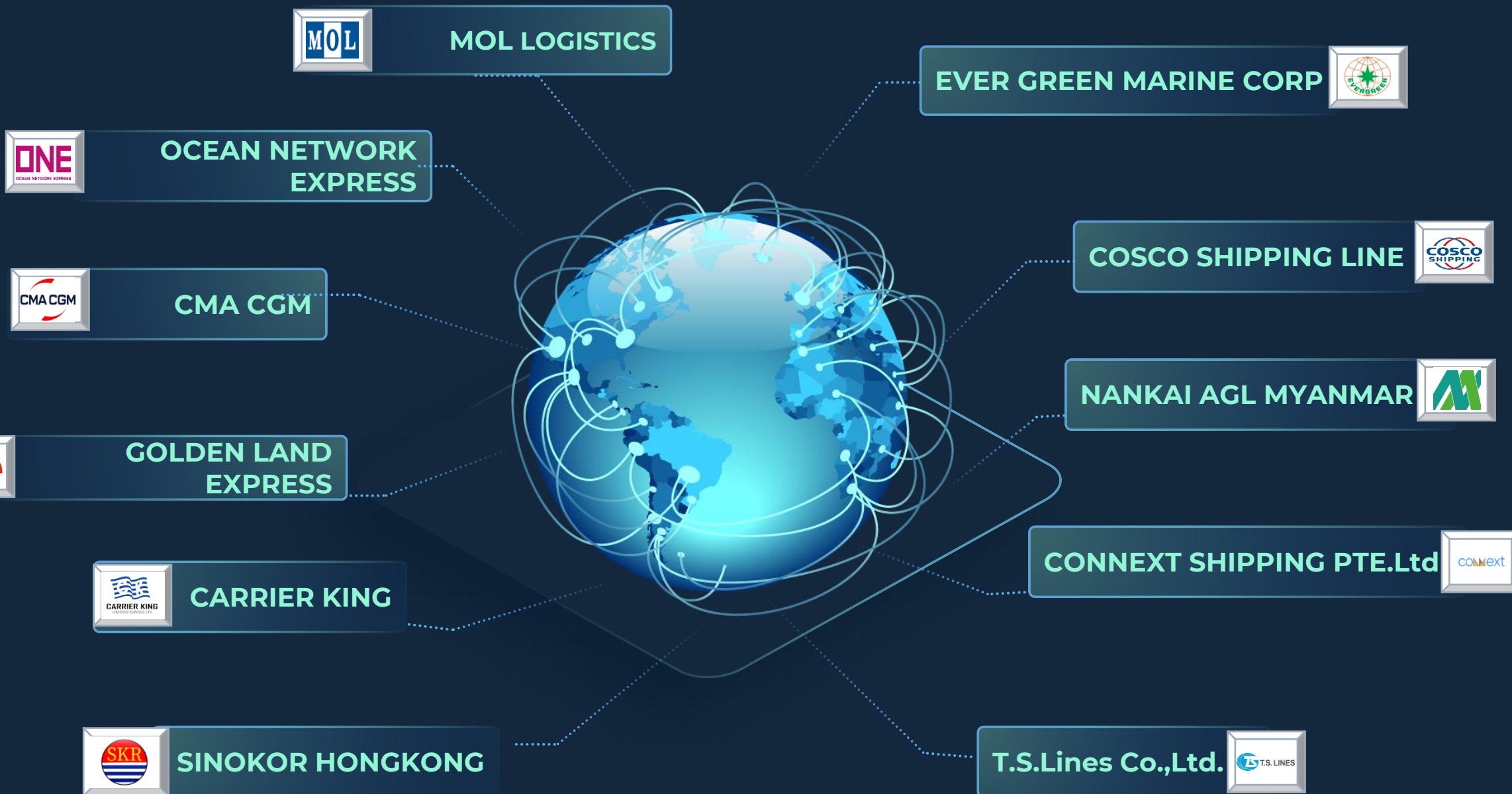
Mr Min Sein
Independent Director



Dr Hla Theingi
Independent Director



OUR TRUSTED PARTNERS



Compliance and Governance

As a Yangon Stock Exchange-listed company, EFR Group is committed to upholding the highest standards of corporate governance and compliance. Our governance framework ensures that we are:



Commitment to Shareholders

- We prioritize transparency, ethical practices, and responsible decision-making to protect shareholder interests.
- Our goal is to continually improve business operations, maximize shareholder value, and ensure timely dividend payments.



Adherence to Regulatory Standards

- EFR Group strictly complies with all regulatory requirements set forth by the Yangon Stock Exchange and other relevant authorities.
- We maintain a strong internal compliance team to ensure ongoing adherence to industry regulations, corporate policies, and legal standards.



Corporate Responsibility and Ethical Practices

- We integrate corporate social responsibility (CSR) initiatives and sustainability practices into our operations.
- Ethical governance is at the core of our business, ensuring long-term growth that is fair, transparent, and responsible.



Board of Directors and Accountability

- Our Board of Directors plays a pivotal role in overseeing the company's governance and risk management strategies.
- We maintain an open line of communication with shareholders and stakeholders, ensuring accountability and transparency in all business operations.



Risk Management

- EFR has implemented comprehensive risk management processes to mitigate financial, operational, and regulatory risks.
- Regular audits and assessments ensure that we identify and address any potential risks, safeguarding the company's future and its stakeholders' interests.



CSR INITIATIVES

2024

On 8 October 2024, E.F.R extended its community support by reaching out to the flood victims of Buu I, Phayar Gone, Ya Thae Sate, Thapyae Gone and Zee Phy Tann villages in Naypyitaw. In response to this devastating natural disaster, our team mobilized to provide essential aid and support, affirming our commitment to community welfare and resilience. This initiative is a testament to our ongoing dedication to corporate social responsibility, as we stand with those in need during critical times.



CONTACT US



ADDRESS

7A, 7th Floor, E.F.R Building,
No. 941, Corner of Shukhintha Myopat Road and Myoma 11th
Street, North 4th Ward, Thaketa Township, Yangon Region.



PHONE

+95 9 889948890 | +95 1 9544076 | +95 1 9544077



EMAIL

info@efrgroupmm.com

WEBSITE

www.efrgroupmyanmar.com



SOCIAL

